



ACCESS STATEMENT

(June 2015)

Introduction

New Art Exchange (NAE) is a contemporary visual arts space in Nottingham that celebrates the region's cultural richness and diversity. It is the largest gallery in the UK dedicated to culturally diverse contemporary visual arts. The venue presents an ever-changing programme of art exhibitions, creative activities for families and young people, film screenings, symposiums, lectures, festivals and a live performance programme of music, dance and theatre. Entry to NAE is free.

In addition to three gallery spaces, the venue has a café-lounge serving delicious home-made food from around the world. We also house a number of workshops and performance spaces.

Our programme of activities is dedicated to stimulating new perspectives on the value of diversity within art and society. Within our galleries we present the work of world renowned British and international artists.

NAE is an Arts Council England funded National Portfolio Organisation. Diversity, innovation and excellence are at the heart of NAE's work. On an annual basis NAE engage over 55,000 visitors, over 100,000 audiences (50% of which are Black Minority Ethnic), deliver over 10 high quality exhibitions and over 90 events and performances. In a bid to embed innovation in policy and practice, NAE also provides specialist support for culturally diverse artists, creative enterprises, cultural leaders and strategic partners.

NAE is central to the urban renaissance of Nottingham, growing new untapped audiences and artistic talent as well as connecting the space and associated artists internationally across the world.

We look forward to welcoming you. If you have any queries or require any assistance please telephone 0115 924 8630 or email info@nae.org.uk

Pre-Arrival

For full details and maps of how to reach us please see the directions section of our website. You can plan your journey by public transport by using Travel Line (<http://www.travelineeastmidlands.co.uk>) and entering our postcode, NG7 6BE.

The nearest railway station is Nottingham. NAE is a 10 minute taxi journey from Nottingham station. DG taxis have wheelchair accessible taxis. These can be booked in advance by calling 0115 9 500 500.

Another direct way of travelling from Nottingham station to NAE is by tram. Trams depart from Nottingham station every 6 minutes and it takes approximately 10 minutes to arrive at NAE's nearest stop - "The Forest". At the previous stop "High School" there will be a public service announcement on the tram saying "Next Stop The Forest". NAE is located directly across the road from The Forest stop and is a two minute walk. There is a pedestrian crossing from the tram stop to Gregory Boulevard.

Meet and greet is available for guests and groups. Please inform NAE day and time of arrival and we will ensure a staff member is available to meet you.



The Forest Tram Stop



The Forest Tram Stop – NAE is to the left of the High Rise Flats on Gregory Boulevard

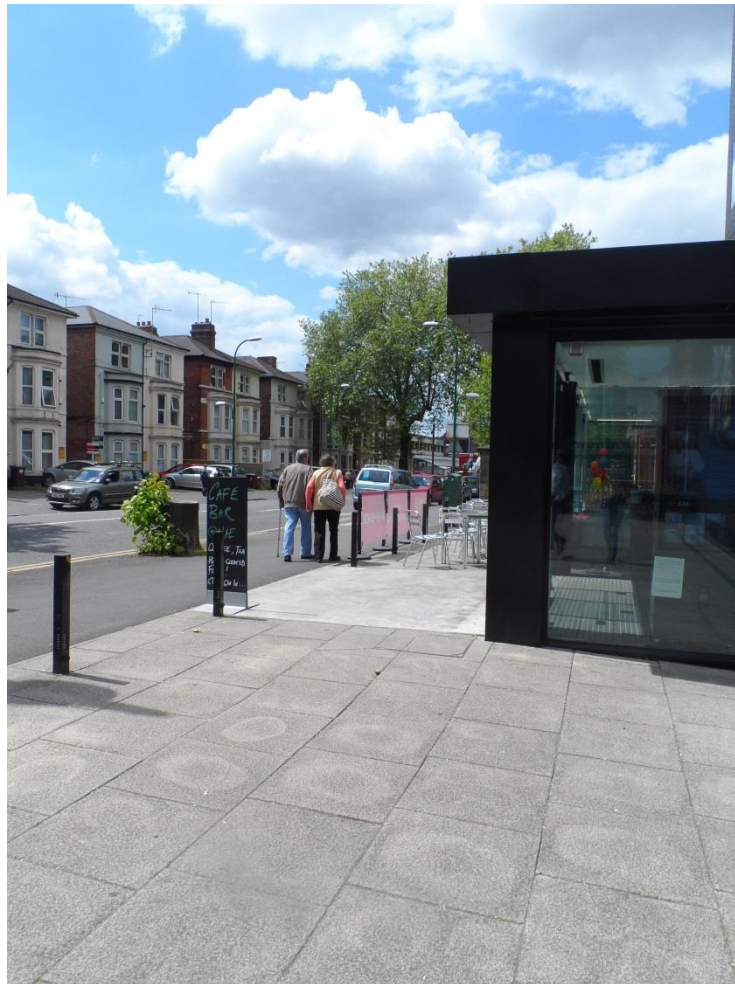


NAE has 2 Blue Badge parking spaces at the rear of the building, just off Terrace Street (NG7 6ER). The area is well lit during darkness hours.

Arrival

NAE is housed in a new purpose built art gallery, built in accordance with current building regulations.

Outside of NAE there is even pavement and a level hard flooring throughout the building's interior.



NAE is made up of a wide variety of spaces totalling 1400m² over five floors. The building is entered from Gregory Boulevard through glazed doors into a double height lobby containing the reception and café.

The building is entirely naturally ventilated. The Reception/Box Office, Café/Shop and Main Gallery is situated on the ground floor. The Mezzanine Gallery is on the first floor. The Performance Space and Learning Room are situated on the second

floor. The Meeting Room is situated on the third floor. All floors have full lift access.

The Main Gallery is vented through the introduction of cold air at low level which is then exhausted through grills at high level.

The Performance Space employs a series of 'windcatchers' to the roof which create a pressure difference and encourage the expulsion of hot air. Other rooms are simply vented by cross ventilation triggered by opening windows.

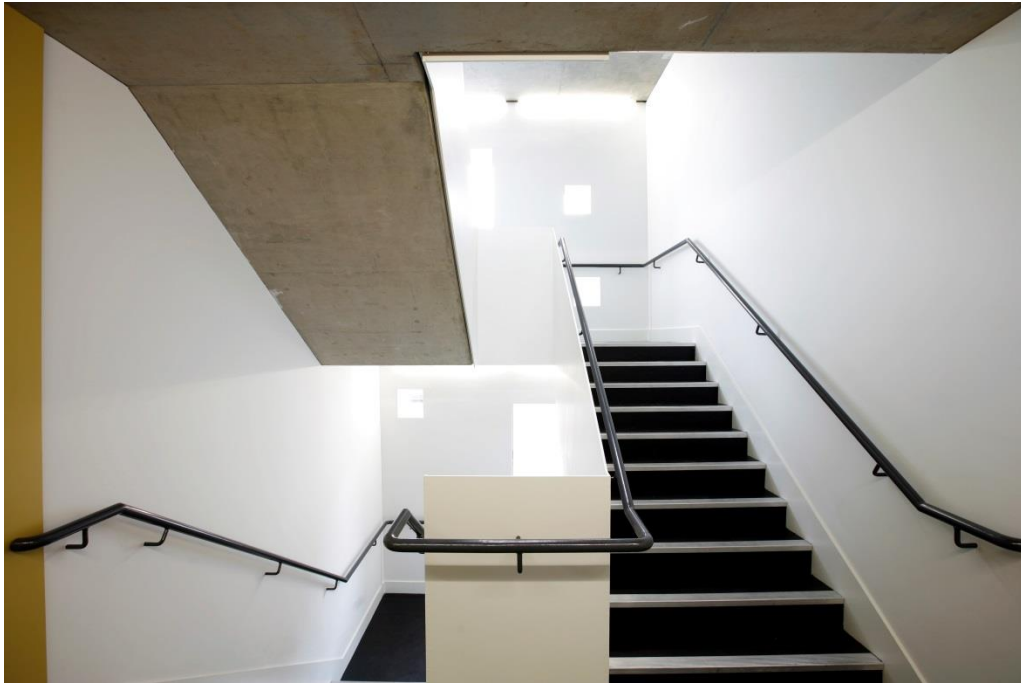
During each exhibition there are a series of artist/curatorial led talks, please enquire at reception for full details and dates.

All 5 floors are accessible through using NAE's large lift (34 people capacity), capable of accommodating multiple wheelchairs (maximum weight 2,600kg). The interior is mirrored to aid wheelchair users in reversing out of the lift.



Passenger Lift

The only space which is not fully accessible is the Central Gallery which is sited on the staircase. This displays temporary exhibition of locally significant artists. For those who are not able to access the stairs, a member of the creative team will be happy to talk through details of the current exhibition and show photographs and leaflets.



Central Gallery

Ground Floor

The main entrance to the building is on the ground floor of the building. There two sets of wide automatic doors. The area is evenly and well lit with overhead lighting from fluorescent lights. The floors are all even and of polished concrete construction.



(Main Entrance with Automatic Doors)

The ground floor has an open plan design, making it easy to access the café, reception and main gallery.



Ground Floor Entrance area

The reception area is constantly staffed and helpful receptionists are available to provide additional information and any help with your access requirements. A hearing loop system is installed on the reception desk. A magnifying glass, pen and pad of paper is also available at the reception desk for your assistance.



Reception Desk

The café has a lowered section of the service counter. Please ask a member of the café team to assist with any access requirements ie removing any potential obstacles ie chairs/tables. Lighting is natural daylight with overhead fluorescent lighting.



NAE Café

Where possible all our food produce is sourced locally. We do our best to cater for any dietary requirements. If you suffer from a food allergy or intolerance, please let us know when placing your order. We have an allergen matrix that identifies which of our dishes contain 14 of the most common food allergens. Please ask a member of the café team for full details.



NAE Café

Adjacent to the main reception counter there are fully accessible toilets and baby changing facilities. Additional accessible toilets and shower facilities are on the second floor. There are vertical rails either side of both the basin and toilet. Right hand transfer. A flashing light is activated when the fire alarm sounds. There is an emergency alarm pull cord. There are lever taps on the sinks.



The exhibitions in the main, mezzanine and central galleries vary with up to 4 different exhibitions in each space annually. On occasion temporary walls are added and lighting settings are altered. The exhibition designs always allow enough space for wheelchairs to navigate. If the gallery is darkened (during film/video installations) lit emergency exit signs are used



The Main Gallery

First Floor

Access to the first floor is via the main passenger lift or stairs. The mezzanine gallery is sited on this floor. Full access is available for wheelchair users.



The Mezzanine Gallery

Second Floor

Access to the second floor is via the main passenger lift or stairs.

The performance space and learning room are sited on this floor. A hearing loop system is installed in the performance space.



The Performance Space



The Learning Room

Accessible toilets, baby changing and seated shower facilities are also available. There are vertical rails either side of the basin, toilet and seated shower. Left hand transfer. A flashing light is activated when the fire alarm sounds. There is an emergency alarm pull cord. There are lever taps on the basin and full length mirror.



There are also three ambulant toilet cubicles on this floor. One for female only and two for male/female.

Third Floor

Access to the third floor is via the main passenger lift or stairs. The meeting room is sited on this floor.



The nearest accessible toilets, baby changing and shower facilities are available on the second floor accessible by the main passenger lift (see above for full description of facilities)

Basement

Access to the basement is via the main passenger lift. Ambulant Toilet facilities are available on this floor

Access Programme

NAE offers an access programme for the various needs of different peoples. Each season NAE hosts a British Sign Language tour of our exhibitions. Regular Body as Canvas events are for adults with mental or physical disabilities. The sessions explore the themes of the exhibition through a participatory movement based workshop.

Due to the nature of the gallery spaces and the readily changing exhibition programme we do not offer audio tours. We have large vinyl signs providing information about each exhibition.

We have a resource area where video clips are shown (with subtitles where possible) and a selection of art/general interest books. Children's activities are also available here. Comfortable seating is provided.

Website

Text Size : You can alter the size of the text on our website by changing the screen size within your browser using your keyboard.

To enlarge text on a PC, hold down **Ctrl** and press **+** and to make the text smaller, hold down **Ctrl** and press

To enlarge text on a Mac, hold down the **Apple** key and press **+** and to make the text smaller, hold down **Ctrl** and press **-**

To return text size to normal setting, hold down **Ctrl** or **Apple** and **0**

Alt tags : We are in the process of tagging all of the images on our website descriptions, so that if for any reason you turn off images from your browser, you will see a description in their place.

Semantic HTML and Screen Readers : Our website uses semantic HTML5 coding. This allows screen readers to detect different elements of text that have been tagged with certain titles. For example, 'Heading' or 'Quote'.

Additional Information

We have a set of evacuation procedures, which a member of staff can talk you through. Evacuation chairs are available.

Assistance dogs are welcome and water can be provided upon request.

All our information can be made available in large print on request. Please just ask at reception.

Shopmobility

A scheme run by Nottingham City Council who provide access to Nottingham City Centre's shops and facilities with the free loan to members of self propelled or powered wheelchairs, 3 and 4 wheeled scooters.

More information can be found here.

<http://www.nottinghamcity.gov.uk/shopmobilitynottingham>

Accessible local hotels

Please see below a list of local accessible hotels.

Premier Inn

[HTTP://WWW.PREMIERINN.COM/EN/HOTEL/NOTMTI/NOTTINGHAM-CITY-CENTRE-GOLDSMITH-STREET](http://www.premierinn.com/en/hotel/notmti/nottingham-city-centre-goldsmith-street)

IBIS

<http://www.ibis.com/gb/hotel-6160-ibis-nottingham-centre/index.shtml>

Contact Information

Address: New Art Exchange, 39-41 Gregory Boulevard, Nottingham. NG7 2NG

Telephone: 0115 924 8630

Email: info@nae.org.uk

Website: www.nae.org.uk

Opening Hours:

Monday: 9.00 am - 3.30pm *

Tuesday: 9.00 am - 6.00pm *

Wednesday: 9.00am - 6.00pm

Thursday: 9.00am - 6.00pm *

Friday: 9.00am - 6.00pm *

Saturday: 9.30am - 5.00pm

Sunday: 11.30am - 5.00pm

* Galleries open at 10.30am

Local Accessible Taxi: DG Cars 0115 9 500 500

Local Travel Provider

Speak to a travel advisor who will help you plan your journey

(Calls cost 10p per minute plus any network charges)

0871 200 22 33