



EXPLORE NOTTINGHAM'S LANDMARKS AND ATTRACTIONS



WELCOME TO NOTTINGHAM!

Or as we say around here, Ey up mi ducks!

There's loads to see – and a lot we wouldn't want you to miss. So we've put this trail together to share some of our best-loved landmarks and favourite facts about

the city, past and present. Just make your way along the trail at whatever pace you like, and let us be your guide. Let's go...



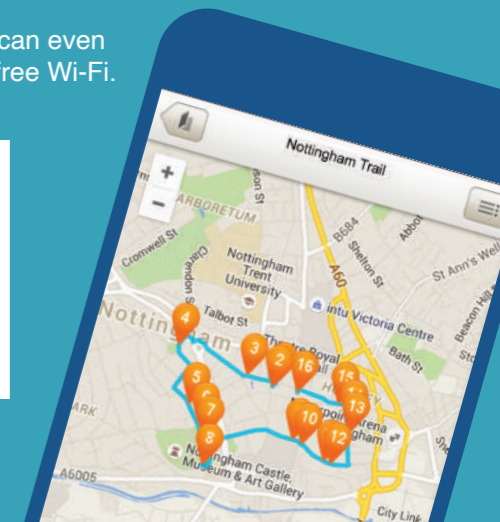
DOWNLOAD THE NOTTINGHAM TRAIL TO YOUR MOBILE DEVICE

Follow these instructions to get started

Simply visit www.guidigo.com and search for "Nottingham Trail". You can then follow the trail within your web browser.

Alternatively, you can download the **GuidiGo** app for free and download the entire trail onto your phone. Simply visit your app store and search for "GuidiGo". Once you have the app, search for "Nottingham Trail" and the trail should appear as a top hit.

To save on data you can even use the city centre's free Wi-Fi.



START - NOTTINGHAM TOURISM CENTRE



To really bring the stories to life, visit GuidiGo.com or download the GuidiGo app and search for "Nottingham Trail".

2 OLD MARKET SQUARE & BRIAN CLOUGH STATUE



One of the largest pedestrianised squares in the UK, overlooked by the Council House and over-95-year-old stone lions, sculpted by Nottingham's Joseph Else. The bronze statue commemorating one of Nottingham and Britain's best-loved sporting icons, football manager Brian Clough, is just ahead.

3 TAKE A LOOK AT: THEATRE ROYAL



Nottingham's Theatre Royal first opened in 1865. It cost £15,000 to build – the same as £1.75 million today – and was funded by the city's lace industry.

4 SKY MIRROR AT NOTTINGHAM PLAYHOUSE



In the forecourt of Nottingham Playhouse stands Anish Kapoor's stunning Sky Mirror sculpture. Forged from strips of stainless steel, it measures six metres across and weighs ten tonnes.

5 LORD BYRON HOUSE



Home of Lord Byron from 1798 to 1799. It's rumoured that he wrote his first verses here, before returning to his ancestral home, Newstead Abbey, and going on to become a world-renowned poet.

6 NOTTINGHAM CASTLE



One of Nottingham's best-loved landmarks, boasting a long and dramatic history. Originally built in 1067, Nottingham Castle has been the site of historic battles, executions, and riots. It's been destroyed and rebuilt twice, and is now a museum and gallery. Discover thrilling tales of Robin Hood and rebellion, explore historic caves, and art collections.

7 ROBIN HOOD STATUE & SEVERN'S HOUSE



The Robin Hood statue was unveiled on 24 July 1952. It was designed to survive for over 6,000 years – despite being a target for souvenir hunters in the 1950s and 1960s. Also note Severn's House behind you - the house that moved.

8 YE OLDE TRIP TO JERUSALEM



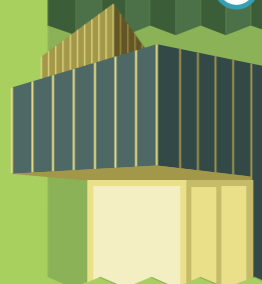
Rumoured to date back to 1189, Ye Olde Trip to Jerusalem claims to be the oldest inn in the UK. The upstairs lounge is home to 'The Cursed Galleon'.

9 CITY OF CAVES



Nottingham is famous for its ancient caves – around 800 have been discovered so far, and it's thought there are at least 200 more. The main entrance to this prime visitor attraction is located at the bottom of the steps at the back of Nottingham Contemporary.

10 NOTTINGHAM CONTEMPORARY & WEEKDAY CROSS



Situated near Weekday Cross is the Nottingham Contemporary which is one of the biggest contemporary art spaces in the UK. It stands on one of the oldest sites in Nottingham, which once housed cave dwellings, a Saxon fort and a medieval town hall.

11 NATIONAL JUSTICE MUSEUM



The National Justice Museum is Nottinghamshire's former courthouse and prison, dating back to 1375. For centuries, this was the only site in the country where you could be arrested, tried, and imprisoned or executed.

12 ST MARY'S CHURCH



St Mary's Church is the oldest religious foundation in Nottingham and the largest medieval building in the city. It's mentioned in Domesday Book and is believed to date back to Saxon times.

13 TAKE A LOOK AT: NATIONAL ICE CENTRE



The National Ice Centre is home to the UK's first twin Olympic-sized rink, and the site where Nottingham-born Olympic champions Jayne Torvill and Christopher Dean first developed their love for skating. It is also home to the Nottingham Panthers ice hockey team.

14 LACE HISTORY, ADAMS BUILDING



In the heart of Nottingham's Lace Market, former lace warehouse the Adams Building opened for business on 10 July 1855. It takes its name from the original owner, Thomas Adams.

15 BROADWAY



Broadway provides a unique cinema-going experience with a packed programme of film screenings, festivals, talks, courses, exhibitions and cultural events. Check out the lively Cafebar too.

16 BOOTS ORIGINS



Having made a success of his first smaller premises on Goosegate, Jesse Boot opened this building as his first major chemist's shop – marking the beginning of a brand that would become recognised around the world. It is now the home of a popular store, Zara.

EXPLORE → NOTTINGHAM'S LANDMARKS AND ATTRACTIONS

NOTTINGHAM TRAIL

4. SKY MIRROR AT NOTTINGHAM PLAYHOUSE

A stunning sculpture by Anish Kapoor

3. TAKE A LOOK AT: THEATRE ROYAL

Nottingham's grandest theatre

2. OLD MARKET SQUARE & BRIAN CLOUGH STATUE

One of the UK's largest pedestrianised squares

16. BOOTS ORIGINS

See Jesse Boot's first major pharmacy store

15. BROADWAY

See this nationally-recognised independent cinema with a lively cafebar

5. LORD BYRON HOUSE

See outside this rebel writer's home in Nottingham

14. LACE HISTORY, ADAMS BUILDING

Sat in the heart of Nottingham's lace industry

6. NOTTINGHAM CASTLE

Originally built in the 11th century

13. TAKE A LOOK AT: NATIONAL ICE CENTRE

Famous for Torvill & Dean and the Nottingham Panthers ice hockey team

7. ROBIN HOOD STATUE & SEVERN'S HOUSE

Nottingham's famous son cast in bronze

12. ST MARY'S CHURCH

Mentioned in Domesday Book

8. YE OLDE TRIP TO JERUSALEM

England's oldest inn - according to folklore

9. CITY OF CAVES

Nottingham is built on a network of hundreds of man-made caves. Entrance at the bottom of the steps at the back of Nottingham Contemporary.

10. NOTTINGHAM CONTEMPORARY & WEEKDAY CROSS

A world-class contemporary art space

11. NATIONAL JUSTICE MUSEUM

Museum of crime and punishment

TRAIN STATION THIS WAY

KEY

Information Centre

Point of Interest

Take a Look!

Paid entry

Free to look around *

No public access to interior

Steep steps

* Charges will apply for events/activities