


 **Light Night Market**
 Long Row / Smithy Row 10am – 10pm
 A hand-picked selection of Nottingham's best street food and independent traders.

 **Nottingham Tourism Centre**
 Smithy Row, Fri and Sat 9.30am – 7.30pm.
 Visit for up to date information on Light Night, pick up the event map and download the official event app.

 **Public Toilets**
 Greyhound Street, Fri and Sat 7am – 10pm.

HIGH STREET BUSINESSES

Much of the city will be open for food / drink / leisure / retail. Check out the Light Night App or visit the website for details.

Eat and drink to your heart's content. Whether you've got a sweet tooth or are looking to spice things up, Nottingham boasts restaurants, lively bars and dessert parlours to satisfy your cravings.

There is also a vast assortment of shops from all your favourite high street

brands to the vibrant streets of Hockley and beyond to sample a range of independent stores.

The City Centre is bursting with culture and entertainment. Whatever your interests, enjoy a selection of theatre, music, comedy, sport, gaming and art from some of the UK's top entertainment venues.

In partnership with



IT'S IN NOTTINGHAM

TRANSPORT SPECIAL OFFERS

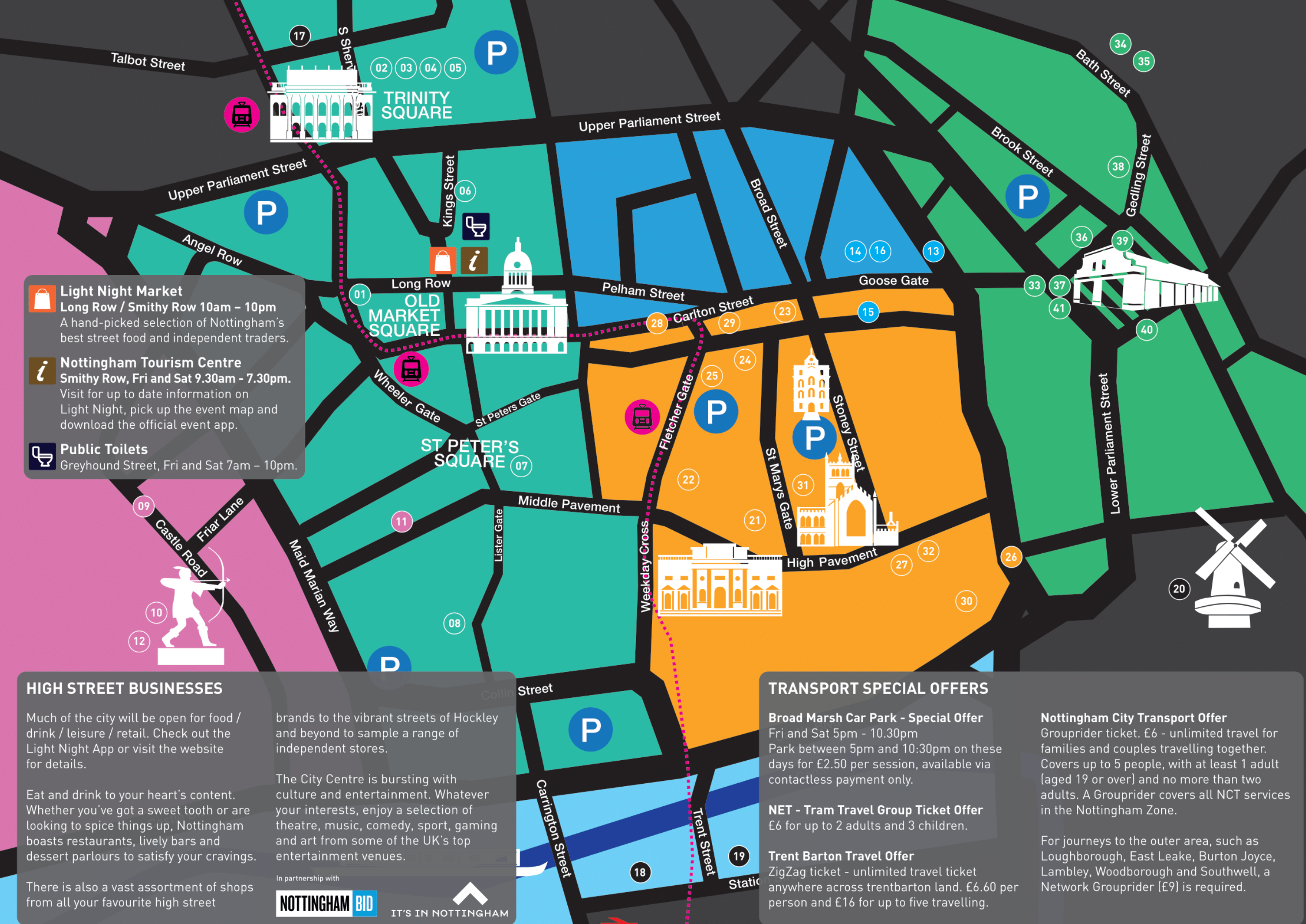
Broad Marsh Car Park - Special Offer
 Fri and Sat 5pm – 10.30pm
 Park between 5pm and 10:30pm on these days for £2.50 per session, available via contactless payment only.

NET - Tram Travel Group Ticket Offer
 £6 for up to 2 adults and 3 children.

Trent Barton Travel Offer
 ZigZag ticket - unlimited travel ticket anywhere across trentbarton land. £6.60 per person and £16 for up to five travelling.

Nottingham City Transport Offer
 Grouprider ticket. £6 - unlimited travel for families and couples travelling together. Covers up to 5 people, with at least 1 adult (aged 19 or over) and no more than two adults. A Grouprider covers all NCT services in the Nottingham Zone.

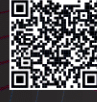
For journeys to the outer area, such as Loughborough, East Leake, Burton Joyce, Lambley, Woodborough and Southwell, a Network Grouprider (£9) is required.



For more information, download the event app or visit our website.



whatsonnottingham.com



Although correct at time of print, times and locations could be subject to change.

OLD MARKET SQUARE

DON'T MISS

01 Rebel Heart - Nonsuch Studios
Fri and Sat 5pm - 10pm

What makes a rebel? What makes a rebellion? What makes a rebel city? A wall of sound, light and projection speaks of the power of change, shares the need for rebels in all walks of life and stands proudly at the heart of the future.

TRINITY SQUARE

02 Fun Chorus

Fri 6pm - 6.45pm
The ultimate feel good, community based, singing experience. There's no auditions, no sheet music and no homework to worry about! Join in singing popular songs.

03 Anarchy in the Tuneless Way

Fri 7pm - 7.45pm
The most REBELLIOUS choirs of all are TUNELESS CHOIRS! They sing like no one is listening and don't care what people think. A Punk playlist includes artists such as Billy Idol, Blondie and the Buzzcocks.

04 Laefer Quartet

Fri 9.45-10.30pm
One of the UK's most dynamic award winning saxophone quartets, performing contemporary music and transcriptions of classical works.

05 Nottingham Ukulele Orchestra

Sat 6pm - 6.45pm and 7.15pm - 8pm
It is almost impossible to listen to or play the ukulele without smiling ... The Nottingham Ukulele Orchestra is the performing wing of the Nottingham Ukulele Club which hosts one of the county's biggest clubs for 'Ukers' with over 100 members.

06 RideWise Green Revolution

King Street, Fri and Sat 5pm - 10pm
Come along and speak to our cycling revolutionaries about how the cycling revolution started in Nottingham and how you can play your part. Join drop in workshops to see how different lights and high vis help you to be visible on your bike - and help decorate bike baskets and accessories.

07 Stories for Rebel Girls: Girlguiding Nottinghamshire

St Peter's Square, Sat 6pm - 10pm
Come and join Girlguiding Nottinghamshire and find out about rebel girls from the past, including some of our own members! What will this inspire you to do?

08 Neon Road Signs

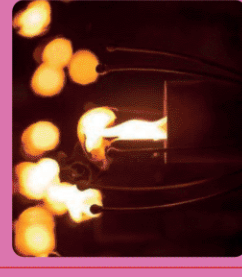
Lister Gate - Fri and Sat from dusk
Raphael Daden is a Nottingham-based sculptor working mainly with light. Neon signs will light up Lister Gate with inspirational messages.

NOTTINGHAM CASTLE

DON'T MISS

09 The And Now: Fire Garden

Fri and Sat 5-8.30pm



Watch the grounds come alive with a fire display like no other. Site of many rebellions, riots and royal rows, the Castle's dramatic history will come alive with a fire trail, illuminating the Castle grounds in a way never seen before. Follow the lit path to the historic bandstand and bear witness to an incredible installation: a huge ball of transparent red liquid suspended from the ceiling, illuminated by 100 lights. **Advance timed tickets have now sold out.** There is limited capacity for walk up admission available on both nights.

HOCKLEY

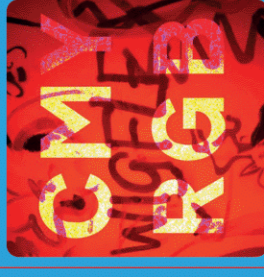
DON'T MISS

13 CMYRGB

The Carousel, Fri and Sat 5.30pm - 10.30pm

The Carousel in collaboration with curator Benjamin Kay

and Martin Rayment present an exhibition of 3 large scale screen prints displayed in lightboxes. This interactive installation of artwork changes before spectators eyes under different lights, voice controlled by the spectators themselves. CMYRGB is a workshop that runs alongside the interactive exhibition. Participants will make artwork in CMY colours along one of the themes of Nottingham's Rebel past. Participants will produce a piece of artwork, exploring the themes and contributing to a collaborative exhibition. www.thecarousel.co.uk



14 Giant Phoenix

City Arts, Fri 7pm - 9pm and Sat 4pm - 7pm
Created in collaboration with Nottingham schools and community groups, led by artist Jessica Kemp. Jess sadly, recently passed away, but celebrating the wonderful things she made for Light Night, the Phoenix is flown in her honour.

15 Words of Wisdom Window Exhibition

City Arts, Fri 5pm - 9pm and Sat 4pm - 8pm
An exhibition of photography by Lamar Francois. Colourful portraits accompany 'Old Time Sayings'. These are aphorisms and idioms shared by older members of Nottingham's African-Caribbean community. Please note - this is a window exhibition only.

16 The Dragon and Her Keeper

Walkabout, Fri and Sat 5.30pm - 9.15pm
Join the Dragon and her Keeper as she wanders the streets of Hockley looking for the battlefield. Be enchanted by this Life like Dragon puppet and her trusty keeper that hopes to one day be a real knight. Learn about the fight to regain the crown for King Richard the 1st.

This performance will start at City Arts and walk around Hockley between 5.30pm - 6.15pm, 7pm - 7.45pm and 8.30pm - 9.15pm each evening.

OTHER AREAS

17 A Little Bit Of Rebellion Is A Good Thing

Tunnel Vision 2 Digital Art Gallery, NG1 3NS
Fri and Sat 8am - 11.30pm

A digital installation created by UK New Artists (UKNA) in collaboration with five Nottingham-based artists. Rebellion is built into the fibre of our city, but not all rebellion is ground-breaking. Rebellion can be small, but so vital. Stories of 'everyday rebellion' will be shown on the Tunnel Vision 2 digital screens at Victoria Bus Station.

18 Waterway Splendour

Castle Wharf, Nottingham Beeston Canal, Fri 5pm - 9pm
Join the Canal & River Trust and enjoy the water in a new way. See the spectacle of Castle Wharf lit up, using hundreds of fairy lights to create a magical canal scene. Make your own floating boat to add to the display.

19 Lights in the Gardens

Arkwright Meadows Community Gardens, Sat 6pm - 8pm
The Community Gardens will be adorned with many lights and lanterns. Come along and have an explore, entrance to the site is free and the gardens look really magical illuminated after dark.

20 Mill by Moonlight

Green's Windmill and Science Centre, Fri and Sat 4pm - 8pm
Explore Green's Windmill and Science Centre after hours on these two special nights. Visitors will have the rare opportunity to climb the windmill after darkness for panoramic views of Nottingham City's twinkling lights. The sails will be turning, making an unusual sight as they rotate in near darkness lit in coloured lighting.

LACE MARKET

DON'T MISS

21 The Telling of the Bees
St Mary's Churchyard, Fri and Sat 5pm - 10pm
Young Landscapers Collective present this magical sound and light installation, drawing on the curious myths and extraordinary facts about bee behaviour and the nature of their collective intelligence.

22 Lace Market Theatre Late Night Opening

The Lace Market Theatre, Fri 7pm-11pm
The Lace Market Theatre is an amateur theatre run entirely by volunteers, staging 14 productions a season. Learn something of the history of this Grade 2 listed 18th century building and see how it is used now. There will be an opportunity to see a play in rehearsal - The Elephant Man and to take part in interactive displays of the lighting and sound technology used in theatres.

23 Art Protest Rebellion

Nottingham College, Fri 5pm - 8.30pm
Students take part in a choreographed 'Protest March' wearing their own printed T Shirts, placards & Banners inspired by the ideas of 'revolution & rebellion' around themes that are most pertinent to young people. They will stop at key venues in Hockley & the Lace Market. See and hear our young artists rebel!

24 Debbie Bryan Light Night Glass

Painting Crafternoon
Debbie Bryan Studios, Fri 12pm - 6pm
Visit this Lace Market gallery and creative space on this family-friendly weekend to indulge in hand-painting. Bring your own jam jar to paint or be provided with your own glass tealight. The Debbie Bryan team will provide you with an introduction, materials and top tips to enjoy this inspiring event. £14 - £32, booking required: debbiebryan.co.uk

25 Debbie Bryan Light Night

Sat 10am - 8pm
Debbie Bryan welcome all ages for an evening of late night shopping, creativity and food and drink. Enjoy delicious sweet treats and tipples alongside dedicated Light Night Crafternoon offerings.

26 Green Light in the City

Nottingham, Fri 5pm - 8pm
Creative hands-on activities and exploration around the topic of the environment. Led by a diverse group of educators and creative organisations, Green Light in the City is a collaborative pop-up with fun activities for all ages and learn about local projects helping to tackle climate change.

27 Hopepunk

Nottingham Contemporary, Fri 6pm - 10pm and Sat 9am - 10pm
Large scale textile banners inspired by a recognition of Nottingham's unique historical legacies of protest, as well as a projection of future aspirations by and for young people currently living and working in and around our city.

28 Illuminate Exhibition

Nottingham College, Fri 4.30pm - 8.30pm
Nottingham College Art & Design hosts an exhibition of student work in reaction to theme of 'illumination'. Students have been inspired by the work of other artists' and designers' in developing ideas relating to light, space and wider themes around the rebellious artist and designer.

29 Illuminated Windows

Nottingham College, Fri 6pm - 9pm
The windows at 25 Stoney Street will be illuminated by the work of Level 2 Art & Design students who have worked on the theme of protest and rebellion, creating screen-prints and digital art-work. The windows will be transformed into a visual gallery space.

30 OneConversation: Back to Normal

The streets of Nottingham City Centre, starts NG1 1HN, Fri and Sat 5pm - 8pm
Learned Disabled and Autistic activist movement 'OneConversation' bring you their response to the 2020 lockdown: Back to Normal - a set of short films that highlight what they are not satisfied with. The films will be emblazoned onto the walls of the City from the 'Light Cycle' - an instrument of guerrilla activism developed by the internationally renowned Urban Projections.

DON'T MISS

31 States of Matter

St. Mary's Church, Fri 6.30pm - 9.30pm and Sat 5.30pm - 9.30pm
This commission explores the varying states of water from ice to steam through this immersive light and sound installation which will take over the whole of St. Marys Church. The piece has been created with the superb Urban Projections team collaborating with young people from across Nottinghamshire. It questions our fragile relationship with water, whilst examining its natural cycle.

DON'T MISS

32 URBN X : SRG

Nottingham Contemporary, Fri and Sat - 6pm, 7pm and 8pm shows (25mins each)
Urban Explorers is Tom Dale Company's annual youth dance project working in partnership with Inspire Youth Arts. 4 youth dance groups will perform alongside professional dancers. This live performance will combine visual art, projection and integrated dance celebrating movement and technology. Pre-book your free ticket at the Nottingham Contemporary website. If there is capacity, walk ups will be accepted on the night.



SNEINTON

DON'T MISS

33 A Rebel City in Motion

Sneinton Market, Fri and Sat 6pm - 10pm
A rebel dares to stand up and to stand out. Situated in the creative heart of Nottingham, this projected motion piece takes over the market and explores the positive associations about being a rebel. Through custom-drawn, animated lettering, this motion piece seeks to challenge how we normally convey information through written communication.

34 Blue Plaque Project

Backlit Gallery, Fri and Sat 6pm - 8pm
Lumina Collective will produce an alternative blue plaque that will shine a light on the people of Nottingham who are often overlooked. An LED scrolling display board, featuring the names of people who have made valuable contributions to their local communities within Nottingham, accompanied by an audio guide sharing the stories behind the people.

35 Get Light & Bright

Backlit Gallery, Sat 6pm - 8pm
A mural making session that explores light and colour. Play with a range of painting, drawing and collage techniques to make your own contribution to our 'Rebel City' mural celebrating the community of Nottingham. Suitable for ages 4+.

36 Exhibition of work by Sarah Flander

Artist's Studio, Fri and Sat 10am - 8pm
Exhibition of sculptures, drawings and prints by artist Sarah Flander, hosted in her working studio.

37 'Fire Head'

Sneinton Market, Fri and Sat 5pm - 10pm
The 'Fire Head' sculpture is filled with 150kg of sustainably produced charcoal and burns for approximately 5 hours. It stands over 2 metres tall, surrounded by large candles radiating warmth and light.

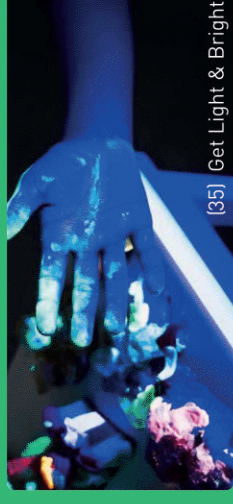


38 Light Night at Sneinton Market

Fri and Sat, Markets to 9pm.
On Friday, Brazilian Carnival Light Parade around the avenues of Sneinton Market with the Brazilian Cultural Centre Maracatu Dancers, Nottingham Samba Collective, Capoeira Nottingham and Inspire Urself Carnival troupe, from 6.30pm to 8pm. On Saturday, Samba, Capoeira and Soca dance workshops at the Brazilian Cultural Centre dance studio, Unit 18 Sneinton Market. From 5pm to 8pm. Market includes laser light shows, live UV graffiti, food, drink, music and more.

39 Luisa's Vegan Chocolates

Sneinton Market, Fri 11.30am - 9pm and Sat 10.30am - 9pm
A small, independent award winning craft chocolate business. The only chocolate makers in Nottingham, making it from the bean to the bar, all our creations are made on site.



[35] Get Light & Bright

40 Surface Reimagined

Surface Gallery, Fri 6pm - 9pm and Sat 5pm - 9pm
Surface opens late for Light Night with two exhibitions on show and window projections on display. The gallery's new front windows will be lit up for the occasion, and our latest exhibition, Surface Reimagined, will have it's opening, alongside the International Postcard Show.

41 Without Asking Why

Sneinton Market, Fri 10am - 10pm and Sat 5pm - 10pm
The time has come, not to believe in every lie. Not to follow every rule, without asking why. - Shon Mehta - A creative installation of visuals and sound. Interact with the touch sensitive device and see and hear responses. Create your own visual and audio tapestry and discover the need to question and keep questioning - a key element to the rebel inside us all.