



Patchings

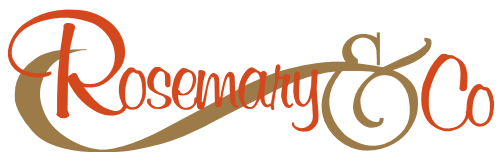
EXHIBITION & EVENTS

DIARY 2020



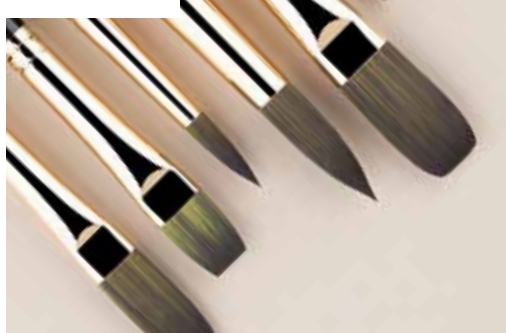
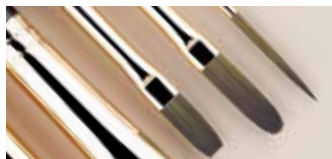
NEW Attraction for 2020
Meet Five Famous Artists on our
Artists' Trail, along with over
60 glorious paintings uniquely
presented alongside nature.

Patchings Art Centre . Nottingham



The Finest Quality Handmade Artists' Brushes

Experience **WHY** the
WORLD'S LEADING
ARTISTS USE
Rosemary's **BRUSHES**



ROSEMARY & CO are proud to support **PATCHINGS ART CENTRE**

OUR 2020 mail order **CATALOGUE** is available. Request **YOUR FREE** copy today!

FAST & AFFORDABLE SHIPPING IN THE UK

Royal Mail - 1st Class over £40 free of charge, under is £2 P&P.

Next day Fedex Courier - £5.50. Orders over £200 free delivery.

01535 632666

www.rosemaryandco.com



Patchings Exhibition & Event Diary 2020

JAN 4 FEB 8	North & East Midlands Photographic Federation Annual Exhibition <small>PAGE 1</small>	FEB 15 MAR 15	Patchings Club Members Exhibition <small>PAGE 1</small>	MAR 21 MAY 8	Botanical Crew Yard Gift Shop <small>PAGE 1</small>
MAR 21 MAY 4	Royal Photographic Society Visual Art Group 2020 Members Print Exhibition <small>PAGE 2</small>	MAR 21 MAY 1	#Connected Photography Exhibition 2/3 May - Celebration Weekend with Guest Speakers <small>PAGE 1</small>	MAR 28	Plant Hunters Fair 10am to 4pm <small>PAGE 3</small>
APR 4	Grounds and Gardens Open 10am - 4pm daily <small>PAGE 6 & 16</small>	APR 13 BANK HOL	Nottingham Bear Fair Monday 10am to 4pm <small>PAGE 4</small>	APR 26	Minster Classic Car Event From 9am <small>PAGE 4</small>
MAY 9 AUG 21	Inspired By Artists Crew Yard Gift Shop <small>PAGE 4</small>	MAY 9 JUN 14	Nottingham and Notts Photographic Federation <small>PAGE 4</small>	MAY 9 JUN 21	Royal Society of British Artists <small>PAGE 5</small>
MAY 24	National Garden Scheme & Open Studios 10.30am to 3.30pm <small>PAGE 8</small>	JUL 9 JUL 12	Patchings Festival 2020 10am to 5pm <small>PAGE 10</small>	JUL 9 AUG 9	The Artist & Leisure Painter Exhibitions <small>PAGE 8</small>
SAT 1 AUG	Jazz on the Lawns 7:30pm - Outdoor Concert	SAT 8 AUG	Plein Air @ Patchings 10am to 4pm <small>PAGE 11</small>	AUG 22 NOV 6	Classical Creatures Crew Yard Gift Shop <small>PAGE 11</small>
AUG 22 OCT 4	Adebanji Alade Exhibition & Book Launch <small>PAGE 12</small>	AUG 22 SEP 27	New Search Press Authors and Artists Exhibition <small>PAGE 11</small>	AUG 31 BANK HOL	Nottingham Bear Fair Monday 10am to 4pm <small>PAGE 11</small>
SAT 3 OCT	Nottinghamshire Book Fair at Patchings 10am - 4pm <small>PAGE 13</small>	OCT 10 NOV 22	The Artist Collection <small>PAGE 13</small>	OCT 10 NOV 15	The Art Club of the Year 2020 <small>PAGE 13</small>
NOV 7 DEC 24	Christmas in the Crew Yard Gift Shop <small>PAGE 14</small>	NOV 27 NOV 29	Patchings Christmas Market 10am to 4pm <small>PAGE 14</small>	DEC 5 DEC 24	Annual A5 Open Exhibition <small>PAGE 14</small>
SAT 12 DEC	For Your Ears Only Opera Dudes in Concert Saturday 7:30pm <small>PAGE 15</small>	SUN 13 DEC	Patchings Carol Concert with Sinfonia Chorale Sunday 7:30pm <small>PAGE 15</small>	JAN 9 FEB 13	2021 Exhibition of Photography The Photographic Alliance of Great Britain <small>Next Years Diary - Page 15</small>

KEY ■ EXHIBITION ■ CONCERT ■ EVENT ■ GIFTSHOP

for more information visit our website www.patchingsartcentre.co.uk

JAN
4
FEB
8

**North & East Midlands
Photographic Federation
Annual Exhibition of
Photography** An Exhibition with over
230 photographs is shown in both the Barn
and Pavilion galleries demonstrating a range
of skills across various genre - a must see
exhibition.



FEB
15
MAR
15

**Patchings Club Members'
Exhibition** This year in the Barn
Gallery we preview 'Our Story of Art II', an
exhibition where Members of the Patchings
Art Club showcase paintings based on works
by some of their favourite artists.
The Members' Exhibition continues in the
Pavilion gallery with a show of their recent
work, which as always is a vibrant and varied
collection.



MAR
21
MAY
8

Botanical Collection Our theme
for Spring this year is all things Botanical. In
part inspiration is from the Plant Hunters Fair
(28 March) and the opening of the garden
walks at Patchings from the beginning of April.
For those with a horticultural eye, a range
of gardening gifts, accessories and fine art
including the floral designs by Gertrude Jekyll.
All these gardening goodies including artwork
by other well known artists and gardening
authors are certain to grab your interest.



MAR
21
MAY
1

#Connected 2020 Returning
for it's 13th year an annual exhibition of
photography. #Connected2020 will be
a celebration of individual and collective
creativity, with the camera playing the part of
the artist's brush. The Exhibition Celebration
Weekend of 2/3 May features two days of
inspiration as we welcome a superb line up
of guest speakers to enthuse you with their
passion and creative journey.
FREE entry to the Celebration Weekend -
see the website for further details.



Royal Photographic Society - Visual Art Group 2020 Members Print Exhibiton

Each year the Royal Photographic Society - Visual Art Group stage a members' print exhibition. An RPS gold medal is awarded for the overall best print together with three certificates for Highly Commended prints and three for Commended prints. In addition each selector makes a personal choice for the award of a certificate. We are pleased Patchings has been invited to host the 2020 exhibition. The exhibition represents the typical depth and breadth of work by group members and images have been selected from over 400 entries.



Wendy North LRPS - *Homage to Mondrian*

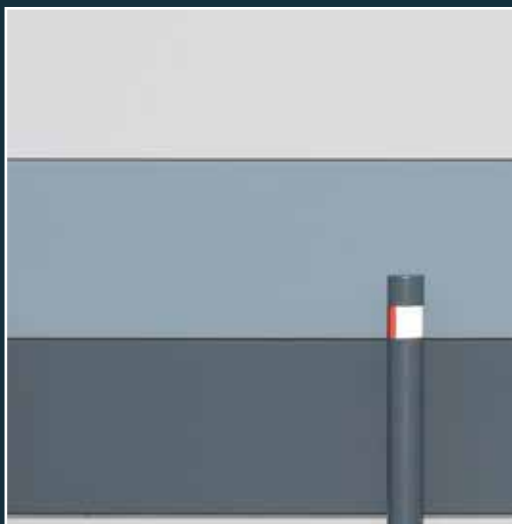
The Visual Art Group (VAG) is one of fifteen special interest groups, alongside eighteen Regions that make up the Royal Photographic Society. VAG supports and encourages all types of photography and its activities encompass both traditional and contemporary interpretations across a wide variety of subject matter. This includes still-life, landscape and architecture to portraiture and macro-photography.

The awards ceremony and official opening of the exhibition will be undertaken by Stewart Wall ARPS, the Regional Organiser for RPS East Midlands and will be at 11.30 on the morning of the 21st March. Please join us – all photographers, potential photographers, family and friends are all very welcome.



Mark Snowdon ARPS - *Saltburn*

“Visual art photography is defined as showing evidence of a personal vision or style which should convey a sense of design, emotion, mood or some meaning which encourages the viewer to look beyond the subject.”



Wendy Meagher LRPS - *South Coast Bollard*

EVENT
SAT
MAR
28
10am
to
4pm
FREE
ENTRY

Plant Hunters' Fairs

Specialist plant fairs
at beautiful gardens & countryside locations



FREE ADMISSION & PARKING

Spring is in the air and it's time to get out in the garden to plan and plant for the year ahead. Where better to be inspired than at this brilliant Plant Hunters' Fair. With FREE entry and parking, this is a great way to begin your gardening year. We invite you to bring along your friends and family to join us for this special day. Both the Patchings Café and Pavilion will be open for home-made cakes and drinks, along with our normal lunchtime and snack menu.

The event offers the opportunity to visit 20 top specialist nurseries and artisans from across the country. All the nurseries attending are happy to offer expert advice to help less experienced gardeners select the right plants for their gardens. For true 'plantaholics' there are always those little treasures to discover that can't be obtained elsewhere.



GREENWOOD
BONSAI STUDIO
LARGEST BONSAI RETAILER IN THE UK!
WWW.BONSAI.CO.UK | 0115 9205757

DIRECTIONS
TURN RIGHT FROM PATCHINGS
THEN RIGHT AT T JUNCTION
WE ARE 400 YDS ON THE LEFT



PAVILION

APR
13

BANK

HOLIDAY

MONDAY

Nottingham Bear Fair 10am to 4pm

Patchings becomes the home for 100's of teddy bears and their friends. An annual treat with free admission and parking.

Refreshments available from the Pavilion and Café.



PAVILION

APR
26

Minster Classic Car Event From 9am

A great opportunity to see the start of a Classic car tour for cars over 20 years old. Their journey begins at Patchings where they register in the Pavilion before leaving for their tour around Nottinghamshire. Join us to see these icons from the past.



CREW YARD

MAY
9
AUG
21

Inspired by Artists

Following on from the opening of our new 'Artists' Trail' last month we continue the celebration by focusing on well known fine art. The inspiration and pleasure we receive through art is not restricted to the wall of the home or office. It can be enjoyed through giftware and collectables, fashion and personal accessories.

Let us prove the point as we look forward to showing you some very special ranges through this exhibition.



PAVILION

MAY
9
JUN
14

The Nottingham & Notts Photographic Society

A photographic print exhibition by members of The Nottingham & Notts Photographic Society. Their 2020 exhibition at Patchings continues the tradition showing a range of subjects where a variety techniques allow members of the NNPS to demonstrate their photographic skills at their best.



MAY
9
JUN
21

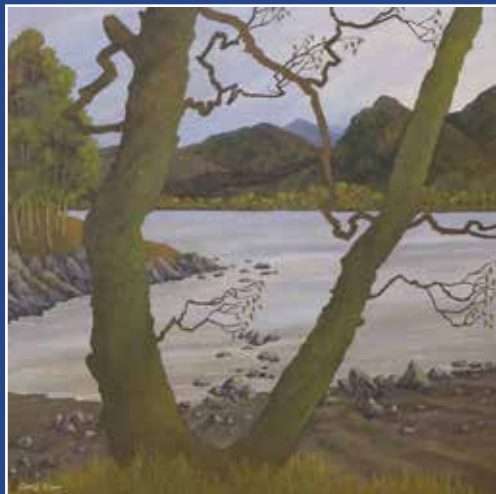
The RBA at Patchings

Selected members of the
Royal Society
of British Artists

The Royal Society of British Artists [RBA] originally established in 1823 and granted royal warranty in 1887, has attracted numerous famous artists as members over the years. These include James McNeill Whistler, Claude Monet, Walter Sickert, L S Lowry, Henry Moore, Philip de Laszlo, Sir Roger de Grey, Carel Weight and many, many others.



Brian George - Derelict Shore Defences



Cheryl Culver - The Lake, All to Myself



Sarah Spackman - Allotment Nasturtiums

Today the Society boasts over 100 of the UK's top painters, sculptors and printmakers as members, all possessing the highest levels of skill and competence in their chosen fields. RBA exhibitions guarantee that no matter what your preferred subject matter, style, medium or colour palette, everyone will be sure to find a work of art they fall in love with.

Join us for the Exhibition Preview
11am-1pm Saturday 9 May



Walking through time with Artists - a magical interactive experience.

Meet and hear from five famous artists and visit their studios.
An outdoor gallery of 'Our Favourite Paintings' uniquely exhibited within glass; their story told with audio. A camera obscura, one of many activities to enjoy in an all year round nature walk.



OPENING APRIL 2020
FREE ADMISSION
SEE WEBSITE FOR
OPENING TIMES

www.artiststrail.co.uk



The European Agricultural Fund
for Rural Development
European investing in rural areas

Patchings ART SHOP & RECEPTION

Patchings Art Shop is one of only a few within the area specialising in materials required for painting and drawing. We stock a wide range of art materials and craft sets from the major suppliers and manufacturers, along with a selection of practical art and craft books. Being able to see the products first hand and talk to those who use and recommend them adds to the buying experience. The Reception is for general enquiries and art school bookings. We have an extensive range of cards with selections from major collections.



- Originals
- Prints
- Cards
- Workshops
- Demonstrations
- Tuition
- Exhibitions
- Commissions

TAS
Tas Severis
ART STUDIO



www.tasseveris.com
tas@tasseveris.com
07710 106360

Patchings Art Centre . Oxton Rd . Calverton . Nottinghamshire . NG14 6NU



With a large selection of mounts and mouldings, with expert advice, we offer a bespoke framing and print service tailored to suit your requirements.

Services include standard picture framing and mounting, 3D object framing, needlework, memorial pictures, custom prints & cards, dry mounting, scanning, photography, artwork facility.



Open 9.30am to 3.30pm Monday – Saturday. Sunday for collections or by appointment.



9am - 5:30pm Daily



The full menu is available during our opening times. Whether it is drinks, homemade cakes, simple snacks and salads or full meals, be assured of a warm welcome.

EVENT

SUN
MAY
24

GROUPS
& GARDENS

Open Studios & National Garden Scheme

Scheme 10:30am to 3:30pm

In addition to our Open Studios event, we join the National Garden Scheme for one day this year with a focus on the treasures that nature provides. Enjoy the tranquil trails that wind their way around a natural landscape to our Monet Lake and Bridge.

New for 2020 - The Artists' Trail.

Refreshments in the Café and Pavilion.



PAVILION
& BARN
GALLERY

JUL
9
AUG
9

The Artist and Leisure Painter Exhibitions

Many hundreds of artists, both professional and amateur, have once again submitted entries for this year's Open Art Competition organised in partnership with *The Artist* and *Leisure Painter* magazines. The selected entries from the UK and overseas form two major exhibitions opening with the Festival.



Robert Burns
By: Michael Corr
Created with: System3
www.michaelcorrartist.co.uk



system3
FLUID Acrylic

System3 Fluid Acrylic is ideal for pouring, dripping and all liquid art techniques.

The range offers great coverage making it perfect for murals and other large surface area applications. All System3 Fluid colours are intermixable and once dry the colours are permanent and water resistant.



NEW JULY 2020

PRIZE DRAW ENTRY

For the chance to win one exclusive System3 Fluid Starter Set every day at Patchings Festival.

EXCLUSIVE TO
**PATCHINGS
FESTIVAL**
9th – 12th
July 2020

Full Name:

Email:

To enter: Complete your details, cut and bring this slip with you to the Patchings Festival at the Daler-Rowney Marquee.

Stay Connected

We would like to send you occasional emails about news and information about art supplies. We will always treat your personal details with care and will never sell them to other companies for marketing purposes. Do you agree to be contacted by Daler-Rowney?

YES

NO

Full terms & conditions available on request.





Patchings²⁰20

THE FESTIVAL OF ART, CRAFT & DESIGN

JULY 9-12

Thursday to Sunday 10am-5pm Daily



ENJOY A GREAT DAY OUT - at the country's leading practical outdoor art and craft event, all set within 60 acres of Nottinghamshire countryside.

SAVE TODAY... buy your tickets in advance saving £1.50 per ticket on Standard and Concessionary tickets. Discounts on Group Bookings and two day Weekend Tickets. Free for School age children with a family group.

Call 0115 9653 479, visit www.patchingsfestival.co.uk or scan the QR code above for more information

Art Materials Marquee

The very best in art material supplies. A huge variety, show offers, test & try areas

Makers Marquee

An unrivalled opportunity to buy direct from designers and makers with a focus on glass, ceramics, sculpture, jewellery, textiles and so much more.

Painters & Print Marquee

Discover a wealth of creativity and genre amongst talented artists. See them at work, commission individual pieces or buy original paintings, prints and cards.

Demonstrations

Some of the country's leading artists and art material suppliers offer demonstrations and workshops.

A daily programme of over 40 practical sessions to encourage and guide, free with an admission ticket.

Meet and be inspired by the work of different guest artists each day.

EVENT

SAT
8

GROUNDS
& GARDENS

Plein Air Patchings

10am to 4pm

Plein Air at Patchings is what it says - simply Painting Outdoors at Patchings.

Ability and experience is put aside for this popular opportunity, where enthusiasm and enjoyment are the only necessities and of course your chosen materials. No charge. Our thanks to Rosemary and Co Brushes for supporting this event with vouchers for a prize draw.



CREW YARD

AUG
22
NOV
6

Classical Creatures at the Crew Yard Gift Shop

This time we add to our regular collection in the Crew Yard Gift Shop with an emphasis on the animal world. Alongside the classy creatures we include nature inspired Glass Art by Elizabeth Welch.

The inimitable style of her work will delight you. Miniature Frogs, Geckos, Birds, Dragonflies, Bees and her iconic collection of Octopus are all exquisite little creatures, painstakingly made by hand.



PAVILION

AUG
22
SEP
27

New Search Press Authors and Artists

Celebrating the 50th anniversary of Search Press, we are pleased to exhibit work from eight of their leading artists - all have published new books this year.

Alison Board, Angela Gaughan, Barry Herniman, Charles Evans, Lesley Linley, Robert Dutton, Trevor Waugh and Vivienne Cawson need no introduction. Join us for the Preview and Book Signing - 11am Saturday 22 August.



PAVILION

MON
31
AUG
BANK
HOL

Nottingham Bear Fair 10am - 4pm

We always make sure we have time in our programme for two visits each year by the teddy bear fraternity. Today is the second regular slot for their visit to Patchings. If you missed the first - today is the opportunity to catch up. Free admission and parking. Refreshments available from the Pavilion and Café.

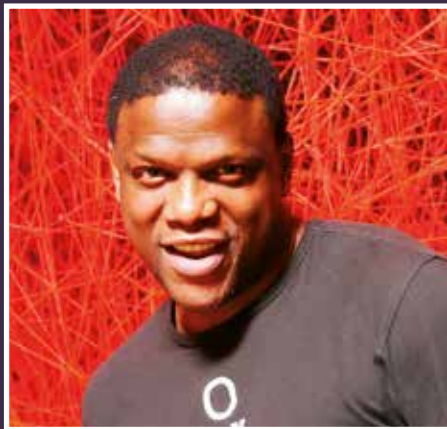


AUG
22
OCT
4

Adebanji Alade VPROI

Adebanji Alade who can be seen regularly presenting Art Documentaries on the One Show, BBC One and who is the Vice President of the Royal Institute of Oil Painters will be exhibiting sketches, drawings and paintings of people and places. His work is exciting, colourful, energetic and full of life. He will also be signing copies of his new book on the preview day. Don't miss this great solo exhibition of one of the UK's most vibrant painters today.

Join us for the Exhibition Preview
11am - 1pm Saturday 22 August
drinks, nibbles and meet Adebanji



Adebanji will be signing copies of his new book during the exhibition preview on Saturday 22nd August



.....Collectable
Antiquarian
Out of Print
 ..First Editions
& Ephemera

Sat. 3 October 2020 : 10-4pm

No Admission Fee – Refreshments Available

BARN
GALLERY

OCT
10
NOV
22

The Artist Collection

The quality and range of work, as seen each year in the professional category of the annual open competition, brought about an extra exhibition a few years ago linked to the award. The Artist Collection features selected artists who join for a group exhibition giving us the opportunity of enjoying a greater range of their work.



PAVILION

OCT
10
NOV
15


The Art Club of the Year 2020 Exhibition

The Artist and Leisure Painter magazines' Art Club of the Year Competition and Exhibition, is held in association with Patchings Art Centre and Jackson's Art Supplies. This is a special celebration of the outstanding work produced by art clubs and societies from



across the country. 10 groups have been selected to show a range of their work.





THE Brew Yard
GIFT SHOP

UNIQUE GIFTS &
PERFECT PRESENTS
FOR CHRISTMAS...

7 November to 24 December 2020

BARN
GALLERY

DEC
5
DEC
24

Annual A5 Open Exhibition 2020

This Exhibition is proving to be one of the most popular in our programme.

Last year we showed over 300 individual works, all of A5 in size but very different - watercolour, oil, mixed media and photographs - all entries hung with the opportunity to buy straight off the wall - ideal for the time of year. Our thanks to **St Cuthberts Mill, Fotospeed and Clairfontaine** for their support.

Visit our website for more information on how to apply to enter the Exhibition - Boards and applications available from February 2020.



Patchings CHRISTMAS MARKET²⁰²⁰

Friday 27, Saturday 28, Sunday 29 November
10am - 4pm daily

The perfect opportunity
to buy individually
designed work
from selected
Artists & Craft makers.

*"Wrap up this
Christmas
at Patchings"*



FREE ADMISSION & PARKING

Saturday 12 December - 7:30pm

FOR YOUR EARS ONLY opera dudes

*Is it a music or comedy act,
Or a couple of blokes in a doft Russian hat?!*



Tickets £13.50 each

Includes a mince pie & glass of wine at the interval

Tickets available on-line or from Patchings Reception

Bookable Pre-Theatre menu available....Please enquire

Sunday 13 December - 7:30pm

Patchings Carol Concert

With Sinfonia Chorale

Directed By Richard Roddis



Tickets £8.50 each

Includes a mince pie & glass of wine at the interval

Tickets available on-line or from Patchings Reception

Bookable Pre-Theatre menu available....Please enquire

Diary Dates 2021

Patchings Festival 2021

Thursday 8 to Sunday 11 July 2021

The largest practical art event in the country

Tickets available on line from 4th January 2021

Patchings Christmas Market

Friday 26 to Sunday 28 November 2021

Our popular indoor event with selected artists and makers - Wrap up this Christmas at Patchings

Exhibitions for 2021 to include

9 January to 13 February 2021

Exhibition of Photography

The Photographic Alliance of Great Britain

Please note:

All information correct at time of print but subject to change. Please refer to our website for any changes to the programme.

Patchings STUDIO ARTISTS

We have a group of independent artists and crafts people working from their own studios at Patchings. If you are making a special visit to see one of our artists please check they will be in prior to your visit.



Tas Severis



Bear Hugs



Claire Beads



Cottage
Textiles



Creative Twists
& Turns



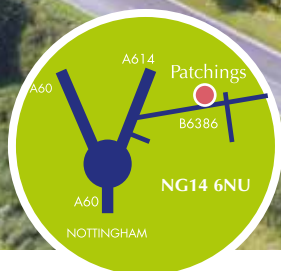
Pete
Bridgwood



Patching's



- 1 - Art Shop & Reception
- 2 - Crew Yard Gift Shop
- 3 - Framing and Print Studio
- 4 - Cafe Patchings
- 5 - The Barn Gallery
- 6 - Nature Walk
- 7 - Artists' Trail
- 8 - The Pavilion
- 9 - To the Monet Bridge



FREE ENTRY & PARKING*

Open 7 days a week from 9.00am to 5.30pm throughout the year, apart from Christmas Day to New Year's Day inclusive.

Please visit our website for opening times of The Artists' Trail as times may vary.

*Except during Patchings Festival 9 -12 July 2020

Telephone 0115 965 3479

Email info@patchingsartcentre.co.uk

Website www.patchingsartcentre.co.uk

Address Patchings Art Centre
Oxton Road, Calverton,
Nottingham NG14 6NU

Grounds and Garden Walks

10am to 4pm April to September.

Discover a myriad of insects, birds, wildlife, flowers and foliage as you meander along the grass paths. See the colours and shapes provided by nature that have inspired artists through the ages.

Access for a stroll between these times is free to Patchings' customers, perhaps before or after a coffee, meal or snack in the Café.

If you would like to Draw or Paint in the grounds, please obtain a Painting Ticket for the day (10am to 4pm) from Reception. £3 per day.

Why not collect a takeaway drink or sandwich from the Café



T E C H N A L O R G B

Discover the power of graphite fused with the magic of water-soluble colour thanks to the Caran d'Ache RGB pencils and grafclubs.

Caran d'Ache. Swiss Made excellence since 1915.

CARAN D'ACHE
Genève

carandache.com

For additional information and stockists please contact: Jakar International Limited, 410 Centennial Park, Elstree WD6 3TJ
Tel: 020 8381 7000 email: info@jakar.co.uk